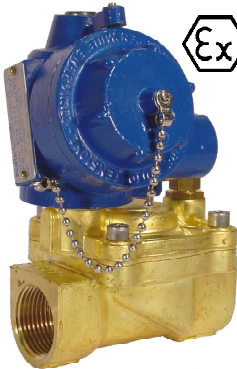


**GENERAL DESCRIPTION / APPLICATIONS / DIMENSIONS (in mm)**



Two way internal pilot solenoid valve.  
Driven diaphragm or driven piston type.

Suitable for gaseous and liquid media compatible with the (body/seals) material used.

Adjustable closing time speed regulator to reduce water hammering available on 1", 1 1/4", 1 1/2" and 2" bodies.

Diaphragm seal type (L65/L66) for general purpose or piston type (L67/L68) used in heavy duty operation; high frequency duty cycle. PTFE piston is suitable for media not compatible with the standard elastomers.

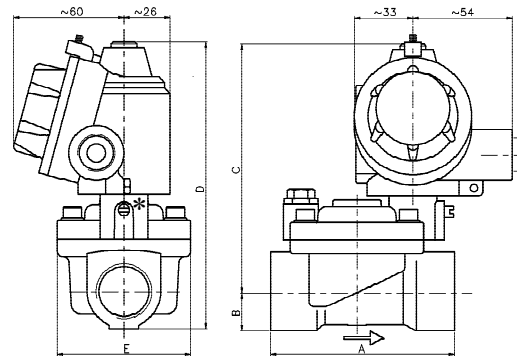
Forged brass, nickel-plated brass or stainless steel body (1/2" & 3/4").

Stainless steel internal parts. Stainless steel springs. 360° degrees orientable solenoid. Mountable in any position.

**ELECTRICAL SPECIFICATIONS**

Light alloy explosion-proof "Ex-d" (EN60079-1) solenoid housing. Electrical and mechanical parts certified according to 2014/34/UE ("ATEX") directive, suitable to control the flow of inert and/or flammable gases or liquids. Internal and external anti-twist ground connecting screws. Inside terminal board suitable for cable up to 2,5 mm<sup>2</sup>.

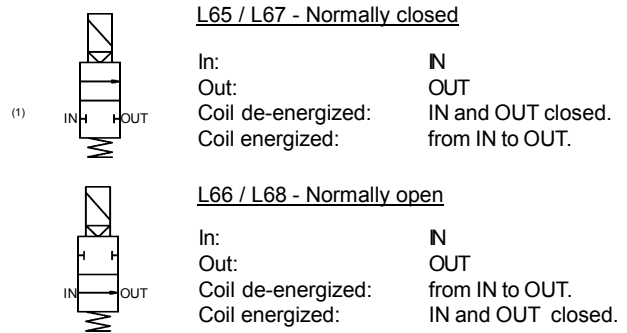
- cable entry threaded: 1/2" Gk UNI-6125 (standard)  
1/2" NPT, ISO M20x1.5 (available upon request)
- protection class: IP-67
- Ex protection class: Ex-d II 1G/2GDc (IIB o IIC)
- Temperature class: T6 or T5 (t.amb -20 ÷ +40 °C)  
T5 or T4 (t.amb -20 ÷ +60 °C) upon request.  
T5 or T4 (t.amb -60 ÷ +60 °C) upon request
- Coil insulation class: F (155°C) - H (180°C) upon request.
- Winding wire class: H (180°C).
- Duty: Continuous (S.I.) 100% ED
- Power consumption<sub>(2)</sub>: Alternate current 11VA (inrush 28VA).  
Direct current 11W.
- Tolleranza tensione: ± 10% (standard) others available upon request
- Voltage tolerance: ± 10%
- Insulation: >1000 MOhm
- Dielectrical Strength: >2000 V/1'
- Standard voltages: 12, 24, 48, 110, 115, 125, 220, 240 Volt
- DC<sub>(3)</sub> or AC~(50/60Hz): other voltages available upon request.



\* Optional Manual Operator

PORT SIZE	DIMENSIONS IN millimeters (mm)				
	A	B	C	D	E
3/8"	64	14	119	133	45
1/2"	64	14	119	133	45
3/4"	82	17	128	145	55
1"	100	20	135	155	70
1 1/4"	144	28	142	170	98
1 1/2"	144	28	142	170	98
2"	152	35	153	188	120

**OPERATION**



**SPECIFICATIONS AND AVAILABLE OPTIONS**

MODEL (Diaphragm seal) <i>Replace with L66 for N.O. model</i>	ORIFICE DIAMETER mm	PRESSURES IN BAR <sup>(3)</sup>								Flow factor kv (liters/min.')	WEIGHT Kg.	
		BODY RATING	MIN./MAX. OPERATING DIFFERENTIAL PRESSURE									
			MIN.	MAX. NORM. CLOSED AC~	MAX. NORM. CLOSED DC=	MAX. NORM. OPEN AC~	MAX. NORM. OPEN DC=					
L 6 5	12,7	25	0,2	16	16	10	10	10	10	35	1	
L 6 5	12,7	25	0,2	16	16	10	10	10	10	40	1	
L 6 5	18	25	0,2	14	14	10	10	10	10	87	1,3	
L 6 5	25	25	0,2	12	12	10	10	10	10	170	1,8	
L 6 5	36	20	0,3	10	10	10	10	10	10	300	3,3	
L 6 5	36	20	0,3	10	10	10	10	10	10	340	3,1	
L 6 5	50	20	0,3	10	10	10	10	10	10	600	4,9	
<b>(Piston seal)</b> <i>Replace with L68 for N.O. model</i>												
L 6 7	12,7	25	0,2	16	16	10	10	10	10	35	1	
L 6 7	12,7	25	0,2	16	16	10	10	10	10	40	1	
L 6 7	18	25	0,2	14	14	10	10	10	10	87	1,3	
L 6 7	25	25	0,2	12	12	10	10	10	10	170	1,8	

suffix (options available upon request): <sup>(1)</sup> "LT" (low t.amb. certificate), <sup>(2)</sup> "LC" (low consumption), <sup>(3)</sup> "AP" (High pressure version)- <sup>(4)</sup> "V" spike suppressor.

a	b	c	d	e
<b>Body material</b> T Brass. N Nickel-plated brass. I Stainless steel *	<b>Port size</b> E 3/8" GAS T 3/8" NPT F 1/2" GAS G 1/2" NPT H 3/4" GAS I 3/4" NPT L 1" GAS M 1" NPT N 1 1/4 GAS O 1 1/2 GAS V 1 1/2 GAS P 2" GAS W 2" GAS	<b>Seals material</b> 0 Buna N 1 FPM 3 PTFE * 6 EPDM	<b>Protection class</b> B Ex-d IIB C Ex-d IIC	<b>Optional features</b> X Stable manual operator.  Option available only for NC models.

\* Available for piston type models only.

\* available only for 1/2" and 3/4" valve.

Le caratteristiche possono subire variazioni senza preavviso / Characteristics may change without notice.