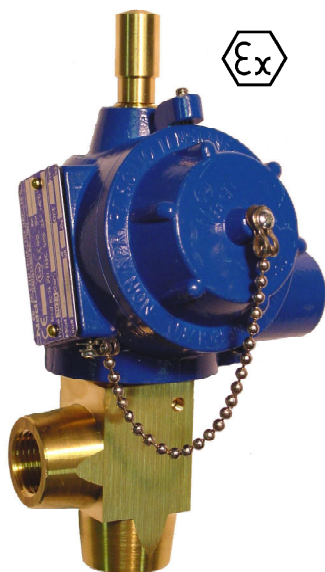


#### GENERAL DESCRIPTION / DIMENSIONS



Two way normally open solenoid valve.

Suitable for gaseous and liquid media compatible with the body and seals materials

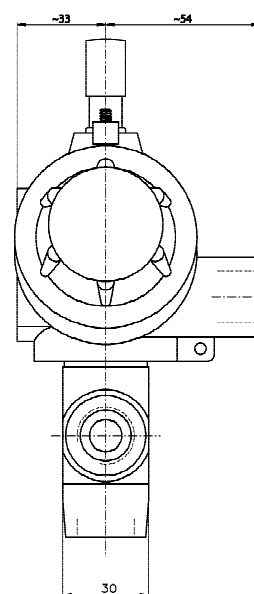
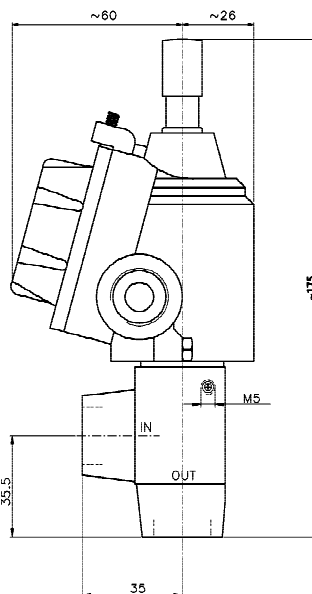
Particularly indicated to control deluge valves.

Stainless steel internal part.

Stainless steel springs.

360° degrees orientable solenoid.

Mountable in any position.



#### ELECTRICAL INFORMATION

Light alloy epoxy painted explosion-proof "Ex-d" (EN60079-1) solenoid housing. Electrical and mechanical parts certified according to 94/9/CE ("ATEX") directive, suitable to control the flow of inert and/or flammable gases or liquids. Internal and external anti-twist ground connecting screws. Inside terminal board suitable for cable up to 2,5 mm<sup>2</sup>.

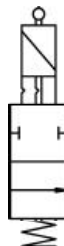
|                        |  |
|------------------------|--|
| cable entry threaded:  | 1/2" Gk UNI-6125 (standard)                              |
| protection class:      | IP-67  |
| Ex protection class:   | II 1/2 GD (Ex-dc, Ex-td A21, IIB, IIC)                   |
| Temperature class:     | T6/T5 (t.amb -20 ÷ +40 °C)                               |
|                        | T5/T4 (t.amb -20 ÷ +60 °C) upon request.                 |
|                        | T5/T4 (t.amb -60 ÷ +60 °C) upon request <sup>(1)</sup> . |
|                        | F (155°C) - H (180°C) upon request.                      |
| Coil insulation class: | H (180°C).   |
| Winding wire class:    | Continuous (S.I.) 100% ED                                |
| Duty:                  | Alternate current* 25W                                   |
| Power consumption:     | Direct current 25W.                                      |
| Tolleranza tensione:   | ± 10% (standard) others available upon request           |
| Voltage tolerance:     | ± 10%  |
| Insulation:            | >1000 MOhm   |
| Dielectrical Strength: | >2000 V/1'   |
| Standard voltages      | 12, 24, 48, 110, 115, 125, 220, 240 Volt                 |
| DC= o AC~(50/60Hz):    | other voltages available upon request.                   |

\* Alternate current operation (Vac~) is performed using a direct current coil fitted with an internal rectifier (Nadi coil type B6/R)

#### OPERATION

Two way Normally open Manual reset solenoid valves are safety lock devices which are manually latched in the "close" position and going back to the "open" position electrically.

Manual reset solenoid valves must be exclusively hand operated to go from the "open" position to the "close" position.



##### "E" type operation - "Energize to trip"

Valve shutter is manually latched in the "close" position with solenoid de-energized. After solenoid is energized shutter unlatch turning valve to the "open" position.

##### "D" type operation - "De-energize to trip"

Valve shutter is manually latched in the "close" position with solenoid energized. When solenoid is de-energized shutter unlatch and valve go to the "open" position.

#### SPECIFICATIONS

| MODEL |     |   |   |   |                 | ORIFICE<br>DIAMETER<br>mm | OPER. | PRESSURES IN BAR                |          |          |    | Flow factor<br>kv<br>(liters/min.) | Weight<br>Kg. |
|-------|-----|---|---|---|-----------------|---------------------------|-------|---------------------------------|----------|----------|----|------------------------------------|---------------|
| a     | b   | c | d | e | NOMINAL<br>MAX. |                           |       | DIFFERENTIAL PRESSURE MIN./MAX. |          |          |    |                                    |               |
|       |     |   |   |   |                 |                           |       | MIN.                            | MAX. AC~ | MAX. DC= |    |                                    |               |
| E 4 0 | 1 1 |   |   |   |                 | 11                        | E     | 25                              | 0        | 12       | 12 | 30                                 | 1.2           |
| E 4 1 | 1 1 |   |   |   |                 | 11                        | D     | 25                              | 0        | 12       | 12 | 30                                 | 1.2           |
|       |     |   |   |   |                 |                           |       |                                 |          |          |    |                                    |               |
|       |     |   |   |   |                 |                           |       |                                 |          |          |    |                                    |               |

|   |  |                                 |  |  |
|---|--|---------------------------------|--|--|
| <b>a</b> Body material                          | <b>b</b> Port size                     | <b>c</b> Seals material         | <b>d</b> Protection class                                      |  |
| <b>T</b> Brass<br><b>N</b> Nickel-plated brass. | <b>F</b> 1/2" GAS<br><b>G</b> 1/2" NPT | <b>0</b> Buna N<br><b>1</b> FPM | <b>B</b> II 1/2 GD - Ex-d IIB<br><b>C</b> II 1/2 GD - Ex-d IIC |  |